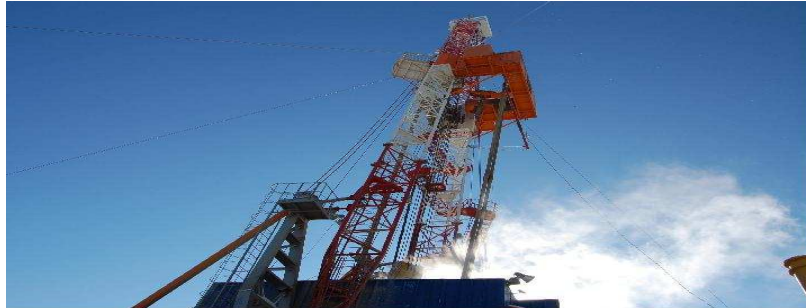


## POLYTRAC FOR EXPLORATION AND MINING



### PolyTrac

Australian-made *PolyTrac Mats* make ideal temporary access roads and platforms for heavy equipment at Exploration, Drilling and Mining sites.

The mats provide a broad surface area, minimising pressure and environmental damage caused by heavy vehicles and equipment. They create a safe, stable base for operations.

### Design

*PolyTrac Mats* are made in Australia from recycled plastic in two sizes, specifically for the onshore Mining Industry:-

- 2400 x 1200mm (8 x 4 ft)
- 4800 x 2400mm (16 x 8 ft)

*They can be made any thickness up to 50-60mm*, which is capable of supporting vehicles in excess of 200 tons.

They have a raised traction pattern both above and underneath. This provides grip for vehicles, and for the ground. Stability can be improved by connecting the mats with separate steel lock-joiners, easily installed from above the mats.

*PolyTrac Mats* use specific super-tough grades of recycled *polyethylene* plastic. Polyethylene is a lightweight composite with no toxic additives such as chlorine. PE is impervious to water and has excellent toughness and crack resistance. The addition of robust UV protection to the material gives *PolyTrac Mats* outstanding weather resistance. This extends the life of the mats for many years.

### Benefits

- Better project safety
- Faster access approvals by landowners
- Maximum environmental protection
- Earlier projects starts and completions
- Fast, safe mat connection system
- Robust toughness, traction and resistance to weather, oils and chemicals
- Easily deployed and redeployed as needed
- Excellent return on investment

- *PolyTrac* has 100% success in the field
- Established manufacturer with excellent quality and technical expertise
- Broad range of *PolyTrac Mats* gives a closer match to specific applications
- Better product support from an Australian-made and owned product
- No agents = local on-call help is immediately available

**Logistics:**

- *PolyTrac Mats* are supplied direct to site from the factory
- Made to order
- Short lead times
- Economical freight anywhere in Australia or overseas

**Established Track Record:**

*PolyTrac Mats* enjoy a great track record in industries including Drilling, Construction, Concreting, Landscaping, and Event Management. Contractors testify to the positive environmental protection, toughness, user-friendliness and economy of *PolyTrac*.

Applications include:-

- Construction sites
- Protection of sensitive environments
- Marine applications
- Access roads and pathways
- Stable bases for temporary buildings and equipment
- Crane outrigger pads
- Public car parking
- "Anti-bog" mats

**Maximum Environmental Protection**

Important initiatives were designed into the environmental qualities of *PolyTrac*:-

- *PolyTrac* is a major user of recycled plastic
- The *PolyTrac* traction pattern design promotes faster environmental recovery
- Non-black mat option protects vegetation from heat absorption and scorching

Polysource Australia is the registered, exclusive manufacturer and supplier of *PolyTrac*.

