

# PolyTrac Ground Protection Mat



100% Australian-Made and Owned



*PolyTrac Environment Protection Mats* make safe temporary access roads and stable equipment platforms. Made in Australia from tough recycled plastic, *PolyTrac Mats* provide the best solution for environmentally sensitive projects. *PolyTrac's* broad range, unique double-sided traction pattern and easy-join system ensure Managers have the toughest mat for the most challenging conditions.

## Range

Mat Sizes mm	Thickness (all sizes)	Mat Weight 2400x1200	Linkable?
2400 x 1200	10mm	29 ka	Yes
2400 x 600	12mm	34 ka	Yes
Larger and smaller sizes available	15mm	43 ka	Yes
	19mm	54 ka	Yes
	25mm	71 ka	Yes
	50mm	145 ka	Yes

## Applications



Events



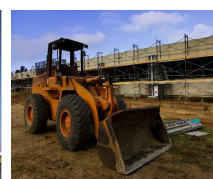
Marquees



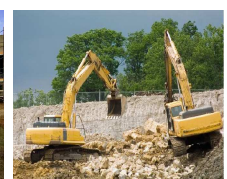
Access



Crane Pads



Landscaping



Construction



Drilling



Recovery



Cemeteries

## Why PolyTrac?

- Australian owned and manufactured
- Maximizes environmental protection
- 100% recycled industrial polyethylene
- Handles heaviest loads
- Lifelong toughness and weather resistance
- Reusable for future projects
- Light weight, easily installed
- Most cost-effective Ground Protection Mat



## PolyTrac Lock-Joiners

- Quick, strong and simple
- Easily installed – No mat lifting
- Safe, flush fit
- Connect all mat directions



Airfields



Car Parks



Military